

# MS4 Construction Program Newsletter



**COLORADO**  
Department of Transportation  
CDOT Water Quality Program

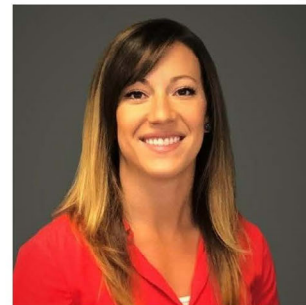
Issue 2

December 2021

## CDOT HQ News

Happy Holidays and New Year! As we wrap up a busy year, we have a lot of exciting news and information to share with you this quarter.

CDOT is excited to welcome a new Environmental Project Manager and Region Water Pollution Control Manager (RWPCM) to Region 4, Jaymee Binion.



Welcome to the team, Jaymee!

- General MS4 eLearning training is almost ready. CDOT internal learners, be on the lookout for the training on CDOT's LMS this Spring.
- The SWMP Recertification Course has been finalized. Classes are going to start in January, 2022. Current SWMP Certificate holders only, please register on [H2O](#).
- HQ is striving to return the TECS class to in-person learning in the Spring of 2022. Virtual classes will be available until then. Come get TECS certified!
- HQ published a Water Quality and Related Environmental Trainings memorandum on November 1, 2021. This memo replaces the Jun 1, 2012 memo and identifies all the available trainings that pertain to water quality. Please refer to the [Training Memo](#) to see what trainings may be required or recommended for you.

- Landscape Specialist, Liia Koiv-Haus, recently published an article in "The Field" - a blog for the American Society of Landscape Architect's Professional Practice Network. In the article Liia discusses strategies to protect pollinators through landscape architecture and land use planning. Check it out [here](#).
- The Landscape Architecture section is revising the topsoil storage Project Special Provision (PSP) Specification to meet the general stormwater construction permit requirements. It is anticipated to be available for use and found on the landscape architect website in early 2022.
- A PSP and pay item for Natina environmental stain for galvanized metal are now available for use. The PSP can be found on the Landscape Architecture [website](#).

Contact the MS4 Construction Program Manager, [laura.newman@state.co.us](mailto:laura.newman@state.co.us) for more information on any of these announcements.

Contact the MS4 Construction Field Manager, [paul.heffernan@state.co.us](mailto:paul.heffernan@state.co.us), for more information and help with the new 2nd Nature Software.

Contact Water Quality Specialist, [valerie.stanson@state.co.us](mailto:valerie.stanson@state.co.us), for training information.

Contact Landscape Architecture Section Manager, [pamela.cornelisse@state.co.us](mailto:pamela.cornelisse@state.co.us), for questions concerning Landscape Architecture related updates.

---

## 2nForm Updates



Thank you to everyone who completed the 2nForm end-user survey for current users of 2nForm, the new ESCAN/CARL. We've received a lot of great feedback and appreciate your time and ideas. Here's the [link](#) if you would like to take the survey or provide additional feedback.

Here are some 2N resources:

- [CARL User Guide - Project Engineer](#)
- [CARL Training Video - Project Engineer](#)
- [CARL User Guide - Contractor](#)
- [CARL Training Video - Contractor](#)

- [Contact Support](#) When submitting a comment that pertains to CDOT, start your description with "CDOT" in the issue field.
- [Construction Bulletin](#) "CDOT's MS4 Inspection software ESCAN/CARL"

We are excited to share some updates that have been made to the program:

- A Public Education and Outreach tool has been developed for CDOT employees to record their outreach and development activities in 2nForm.
- The Construction Sites tool updates include:
  - The Deferment Button is live; however, be aware that it is only available for 1 day after the inspection.
  - 2nForm autogenerated 105's are coming soon! This is currently being tested and will be active in the new year.
  - 2nd Nature will be offering live demos in the early Spring. Date and time TBD.
- 2nd Nature is developing their own app to replace the current app. This will make it easier for them to customize some aspects of the tool to meet CDOT's needs like CDOT's unique nomenclature.

---

## Study - Artificial Intelligence in Stormwater Inspections

CDOT sponsored an exciting study that researched the use of artificial intelligence (AI) to aid in permit-required stormwater inspections, especially on large projects. The premise was that the AI can pre-screen a construction site by evaluating imagery of stormwater control measures (collected from drones) and then flag potential issues for field confirmation by inspectors.

This initial study was a proof of concept study to determine if the AI could be taught to identify findings on a control measure. The initial results from this study are very promising and CDOT's consultant presented the findings at our internal Environmental Training Workshop and at the Mountain States IECA conference. If there is enough interest, HQ staff can also prepare a webinar for either live viewing or to watch as a recording later.

If you are interested in a webinar on these findings, please contact Laura Newman at [laura.newman@state.co.us](mailto:laura.newman@state.co.us).

---

## CDOT Environmental Training Workshop (aka F2F)

Statewide CDOT Environmental Staff met both virtually and in-person in Durango this Fall to meet our required training requirements and keep our program updated. A huge thank you to Region 5 for hosting a fantastic hybrid gathering. The training was packed with informative presentations, networking, a field trip to the [US 550/160 Connection project](#), and a sneak peak at a fascinating video featuring our very own Archeological staff. The video provides information on the extensive effort spent documenting and preserving the many archeological features discovered during the construction of the Connection project. The video will be broadcast on Rocky Mountain PBS on January 16, 2022 at 10:00 AM, and again on March 17, 2022 at 7:00 PM.

For the MS4 Construction Program, Paul Heffernan trained staff on Inadequate Findings and CDOT's consultant gave a presentation summarizing the changes to the MS4 Construction Sites Program Manual. They also gave attendees a presentation on the findings of the Artificial Intelligence on Construction Sites preliminary findings.

---

## Decision on WOTUS Ruling

On September 3, 2021 the EPA and the Department of the Army announced that, in response to a decision from the U.S. District Court for the District of Arizona, they are interpreting "Waters of the United States" using the pre-2015 regulatory regime, including the [Rapanos Guidance](#), until further notice. On December 7th a proposed rule to revise the definition of "Waters of the United States" was published, and comments are due on February 7, 2022. Visit [Public Outreach and Stakeholder Engagement Activities | US EPA](#) for more information or to provide comments.

---

## Possible Wood Mulch and Seed Shortage

In last quarter's issue we reported on a possible wood mulch shortage. In addition, it is anticipated there may be a seed shortage in 2022 due to shutdowns, droughts, and wildfires. Please be proactive on your construction sites when planning the use of either mulch or seed. For projects underway, please reach out to your Region's or Project Landscape Architect or Environmental Specialist and they can assist with substitutions if needed.



---

## Regulatory Updates

The EPA is in the process of reissuing its Construction General Permit (CGP) for stormwater discharges from construction activity. The comment period for the new permit ended on July 12, 2021. Once finalized, the new permit will replace the 2017 CGP which expires on February 16, 2022, and will cover stormwater discharges from construction activities in areas where EPA is the NPDES permitting authority in EPA's Regions 1, 2, 3, 4, 5, 6, 7, 8, 9, and 10 (such as Indian Land, military bases, and federal facilities). The EPA hosted a webinar on June 17, 2021 to summarize the proposed permit and changes. You can view a recording of the webinar [here](#).

Refer to the [Fact Sheet](#) for more information.

---

## Regulatory Inspection Updates

The Colorado Department of Public Health and Environment (CDPHE) conducted an inspection on a CDOT project in Durango this summer. The project passed their CDPHE inspection with flying colors and received compliments on a fantastic SWMP.

Thanks to the [US550/160](#) Connection project team and all of our ECIs for their efforts. The project did receive a few minor findings, and these are reflected in the Common Inspection Findings section below.

---

### Common Inspection Findings (Field and SWMP)

- Vehicle track off
- Corrective actions not



- Material waste/trash on site completed immediately
- Excess sediment behind silt fence/erosion logs
- Earth berms not compacted
- Control measures not adequately maintained
- Hydromulch sprayed over the inlet
- Inlet protection does not cover entire opening
- Secondary containment collapsed/not adequate
- Field conditions not accurately represented

## Upcoming Trainings and Conferences



<a href="#">CDOT SWMP Recertification Class (Virtual)</a>	1/12
<a href="#">CDOT TECS Certification Class (Virtual)</a>	1/19 - 1/20
<a href="#">CDOT TECS Certification Class (Virtual)</a>	1/25
<a href="#">CDOT SWMP Recertification Class (Virtual)</a>	2/9
<a href="#">CDOT TECS Certification Class (Virtual)</a>	2/23 - 2/24
<a href="#">CDOT SWMP Recertification Class (Virtual)</a>	3/8
<a href="#">CDOT TECS Certification Class (Virtual)</a>	3/16 - 3/17

### MS4 Construction Program Contacts:

Laura Newman [laura.newman@state.co.us](mailto:laura.newman@state.co.us)

Paul Heffernan [paul.heffernan@state.co.us](mailto:paul.heffernan@state.co.us)

Val Stanson [valerie.stanson@state.co.us](mailto:valerie.stanson@state.co.us)



### MS4 Construction Program Website:

<https://www.codot.gov/programs/environmental/water-quality/stormwater-programs/construction-sites-program>

[View this email in your browser](#)



---

*Copyright © 2021 Colorado Department of Transportation, All rights reserved.*  
You are receiving this email because you opted in to receive CDOT Water Quality class notifications.

**Our mailing address is:**  
Colorado Department of Transportation  
2829 W Howard Pl  
Denver, CO 80204-2305

[Add us to your address book](#)

**Sign up for this newsletter** [here](#)

Want to change how you receive these emails?  
You can update your preferences or unsubscribe from this list.

